



100% ELECTRIC

CAR LIST CURRENT 15th December



About the Good Car Company

The Good Car Company exists to decarbonise transport. We do this by providing affordable high-quality electric vehicles. We stand by our vehicles and are happy to offer Australia's leading warranty for imported electric vehicles.

- BATTERY WARRANTY. 24 kWh have 6 months battery warranty, 30kWh models have 2 year protection and the 40 and 62kWh models 3 years. Warranty may vary on location.
- 6-month mechanical warranty
- All vehicles come with battery diagnostics, fully detailed, language conversion and 10 amp car charger
- 30-day return policy (conditions apply)

CONTENTS

24kWh Nissan Leaf AZE0 - page 3

30kWh Nissan Leaf AZE0 - page 5

40kWh Nissan Leaf ZE1 - page 9

62kWh Nissan Leaf ZE1 - page 14

Nissan eNV200 Vans - page 17

These vehicles are in stock and available for delivery in the next 12 weeks. We sell vehicles first in best dressed, so contact us to secure a vehicle. If you are looking for other models, colours or specifications of a Nissan Leaf, please get in touch: info@goodcar.co. All prices include GST and the cost of delivery to our partner in capital cities in TAS, SA, NSW, ACT, QLD and VIC. If you would like delivery to another location, we will quote an additional delivery fee to cover costs. Car prices don't include registration and transfer fees, so please factor this into your budget. Please check your state's incentives for EVs, these can include waiving of registration fees (ACT), stamp duty (Tasmania, NSW) or payment of a subsidy to you (VIC). We provide a roadworthy certificate and all the necessary paperwork for you to register the vehicle yourself. Breathe easy.

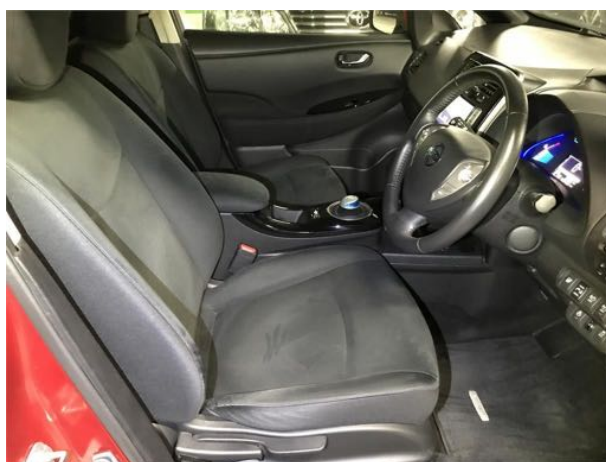
CONTACT US (03) 6121 4624 info@goodcar.co www.goodcar.co

24 kWh Nissan Leaf AZE0, VIN: 105876

\$21,399

Year: 2014, Battery SoH: 80%, Odo: 30,500km, Colour: Red, Forecast delivery: late March 2022

Reversing camera. Heated seats. B mode regenerative braking. Heated steering wheel. Cruise control. Steering wheel audio controls. Approximately 110km town range and 90km on highway.

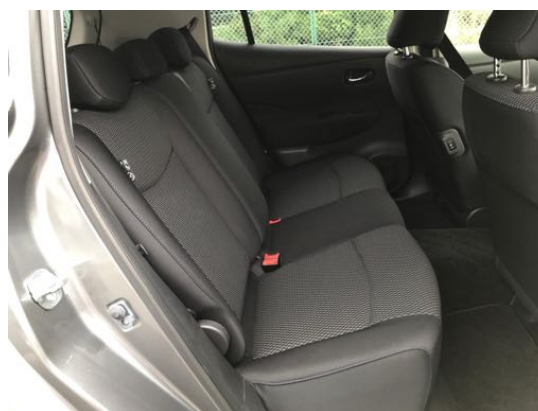


24 kWh Nissan Leaf AZE0, VIN: 217949

\$21,890 **SOLD**

Year: 2017, Battery SoH: 82%, Odo: 36,000km, Colour: Grey, Forecast delivery: February 2022

This is one of the newest 24kWh vehicles we have seen and is in clean condition. Lower trim level S. No maps, carplay or reversing camera. Heated seats. Heated steering wheel. Approximately 110km town range and 90km on highway.



30 kWh Nissan Leaf AZE0, VIN: 221431

\$27,490 **SOLD**

Year: 2017, Battery SoH: 81.5%, Odo: 35,000km, Colour: White

Reversing camera. Heated seats. B mode regenerative braking. Heated steering wheel. Cruise control. Steering wheel audio controls. Approximately 164km town range and 126km highway range.



30 kWh Nissan Leaf AZE0, VIN: 217074

\$27,890 **SOLD**

Year: 2017, Battery SoH: 87%, Odo: 47,500km, Colour: White

Reversing camera. Heated seats. B mode regenerative braking. White fabric seats, but comes with leather and suede covers. Sweet mags (we really mean it, they are so flash). Heated steering wheel. Cruise control. Steering wheel audio controls. Approximately 154km town range and 126km highway range.



30 kWh Nissan Leaf AZE0, VIN: 222421

\$28,450

Year: 2017, Battery SoH: 81%, Odo: 66,000km, Colour: Silver, includes NSW registration and CTP. **AVAILABLE IN NSW ONLY.**

Reversing camera. Heated seats. B mode regenerative braking. Heated steering wheel. Cruise control. Steering wheel audio controls. Approximately 154km town range and 126km highway range.



40 kWh Nissan Leaf ZE1, VIN: ZE1-004489

\$39,390 **SOLD**

Year: 2017, Battery SOH: 87%, Odometer: 47,000km, Colour: White

Reversing camera. Heated seats. Heated steering wheel. Apple car play. One pedal driving option. Pro-pilot Cruise control. Steering wheel audio controls. Sweet alloy rims. Approximately 240 km town range and 200km on highway.

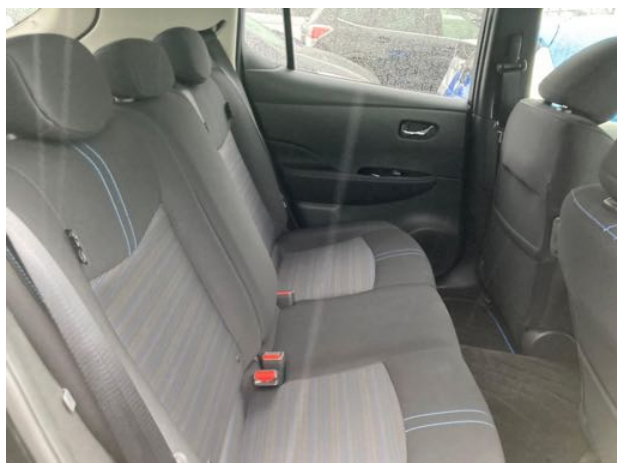


40 kWh Nissan Leaf ZE1, VIN: ZE1-026712

\$41,990 **SOLD**

Year: 2018, Battery SOH: 96.87%, Odometer: 3,000km, Colour: Black, Forecast delivery: May 2022

Reversing camera. Heated seats. Heated steering wheel. Apple car play. One pedal driving option. Pro-pilot Cruise control. Steering wheel audio controls. Sweet alloy rims. Approximately 240 km town range and 200km on highway.

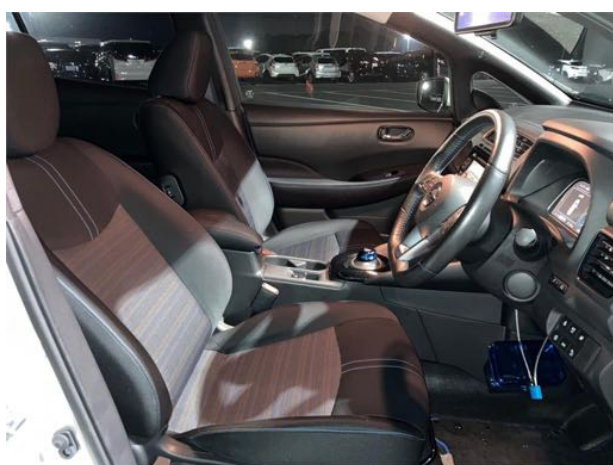


40 kWh Nissan Leaf ZE1, VIN: ZE1-026812

\$40,990 **SOLD**

Year: 2018, Battery SOH: 91.27%, Odometer: 10,500km, Colour: Silver, Forecast delivery: May 2022

Reversing camera. Heated seats. Heated steering wheel. Apple car play. One pedal driving option. Pro-pilot Cruise control. Steering wheel audio controls. Sweet alloy rims. Approximately 240 km town range and 200km on highway.

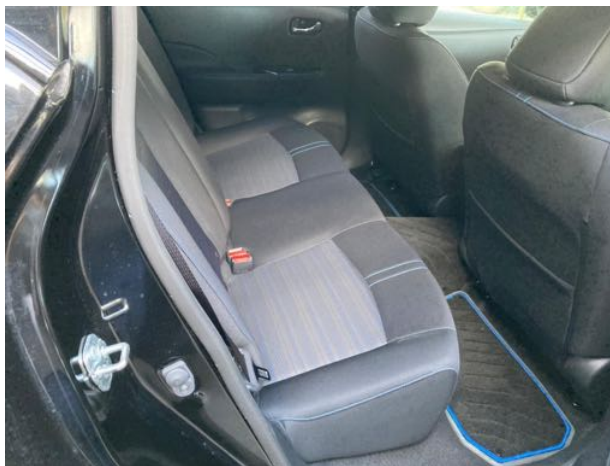


40 kWh Nissan Leaf ZE1, VIN: ZE1-006494

\$40,490

Year: 2017, Battery SOH: 92.5%, Odometer: 33,000km, Colour: Black, Forecast delivery: March 2022

Reversing camera. Heated seats. Heated steering wheel. Apple car play. One pedal driving option. Pro-pilot Cruise control. Steering wheel audio controls. Sweet alloy rims. Approximately 240 km town range and 200km on highway.

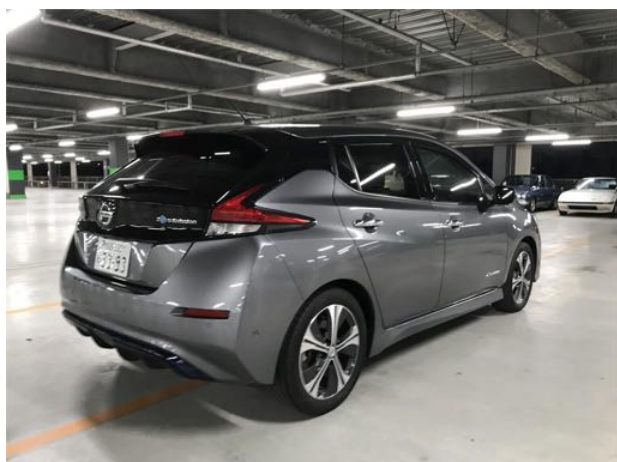


40 kWh Nissan Leaf ZE1, VIN: ZE1-019592

\$41,990 **SOLD**

Year: 2019, Battery SOH: 92.5%, Odometer: 13,500km, Colour: Gunmetal grey, Forecast delivery: March 2022

Reversing camera. Heated seats. Heated steering wheel. Apple carplay. One pedal driving option. Pro-pilot Cruise control. Steering wheel audio controls. Sweet alloy rims. Approximately 240 km town range and 200km on highway.

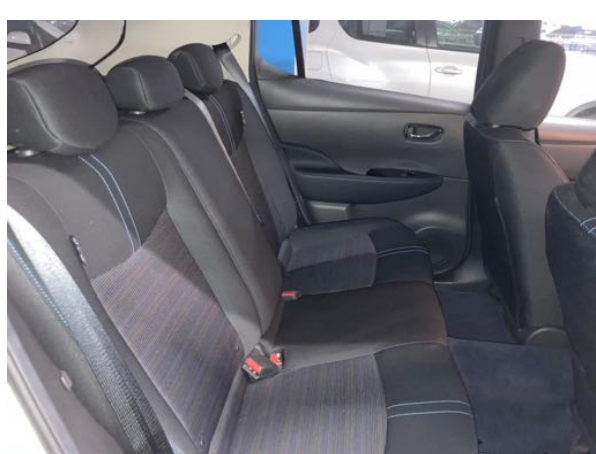


62 kWh Nissan Leaf ZE1 e+, VIN: ZE1-062806

\$52,990 **SOLD**

Year: 2020, Battery SOH: 96.27%, Odometer: 8,000km, Colour: White, Forecast delivery date: Late February 2022

Reversing camera. Heated seats. Heated steering wheel. Apple carplay. One pedal driving option. Pro-pilot Cruise control. Steering wheel audio controls. Approximately 350 km town range and 300km on highway.



62 kWh Nissan Leaf ZE1 e+, VIN: ZE1-090307

\$51,290 **SOLD**

Year: 2020, Battery SOH: 93.11%, Odometer: 44,000km, Colour: Black, Forecast delivery: Late February 2022

Reversing camera. Heated seats. Heated steering wheel. Apple carplay. BOSE sound system. Leather seats. One pedal driving option. Pro-pilot Cruise control. Steering wheel audio controls. Approximately 350 km town range and 300km on highway.



62 kWh Nissan Leaf ZE1 e+, VIN: ZE1-092214

\$51,990 **SOLD**

Year: 2020, Battery SOH: 93.95%, Odometer: 25,000km, Colour: Grey, Forecast delivery: Late February 2022

Reversing camera. Heated seats. Heated steering wheel. Apple carplay. BOSE sound system. Suede and leather seats. One pedal driving option. Pro-pilot Cruise control. Steering wheel audio controls. Approximately 350 km town range and 300km on highway.

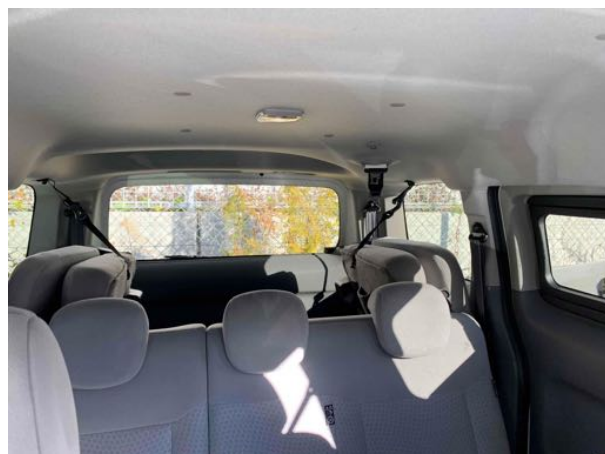


24 kWh Nissan eNV200, VIN: ME0-508631

\$29,990 **AVAILABLE NOW**

Year: 2016, Battery SoH: 79.5%, Odo: 26,000km, Colour: White

4 Seater, but can be upgraded to a 5 - 7 seater, certificates provided. Heated seats. Reversing camera. B regenerative driving mode. Eco driving mode. Charge timers. Approximately 110km town range and 90km on highway. Registered in Tasmania.



24 kWh Nissan eNV200, VIN: ME0-507962

\$29,990 **SOLD**

Year: 2015, Battery SoH: 83.5%, Odo: 13,000km, Colour: Silver

4 seater van. Can be upgraded to a 7 seater, certificates provided. Heated steering wheel. English headunit. Heated seats. Reversing camera. Trim 'G'. Approximately 110km town range and 90km on highway.



24 kWh Nissan eNV200, VIN: ME0-509320

\$29,990 **AVAILABLE NOW**

Year: 2016, Battery SoH: 85%, Odo: 18,500km, Colour: Silver, Forecast delivery: December 2021

4 seater van, upgradable to 7 seats, certificates provided. In excellent condition. Heated steering wheel. English headunit. Heated seats. Reversing camera. Trim 'G'. Approximately 110km town range and 90km on highway.



24 kWh Nissan eNV200, VIN: VME0-507518

\$27,990 **SOLD**

Year: 2016, Battery SoH: 83.5%, Odo: 12,000km, Colour: White, Forecast delivery: December 2021

2 seater van, no increased seating option, rear bench seat not for passengers due to Australian Design Rules. Head unit in Japanese. (Head units available from \$250 at your local audio/visual shop) Approximately 110km town range and 90km on highway.



24 kWh Nissan eNV200, VIN: VME0-507780

\$27,990 **SOLD**

Year: 2016, Battery SoH: 86%, Odo: 23,500km, Colour: Silver

2 seater van, no increased seating option, rear bench seat not for passengers due to Australian Design Rules. Head unit in Japanese. Approximately 110km town range and 90km on highway.

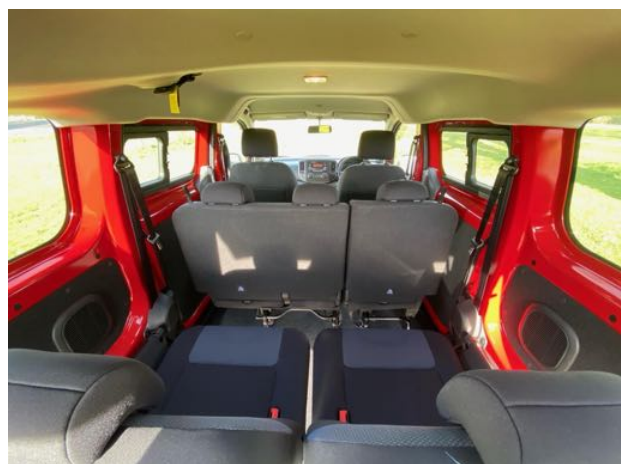


Nissan eNV200 40kWh VIN: 627977

\$69,000

Year: 2021, Battery SOH: Odo: <500km, Colour: Red, **AVAILABLE NOW**

Ex-demo model. Imported from the UK. 7 seater van. Heated steering wheel. Heated seats. Reversing camera. Range approx 220km.



Nissan eNV200 40kWh

\$69,000

2021 models. Imported from the UK. Range approx 220km. Available in 4, 5, and 7 seats. Heated steering wheel. Heated seats. Reversing camera. Trim 'X'.

Special ordering system coming soon, please email us at info@goodcar.co and we'll send you details.



Peugeot e-expert Van 75kWh

\$89,990

Imported from the UK, Year: 2021. Range approx 350km. Towing capacity 1,000kg. Also available in a 50kWh size. Only available through ordering.

Special ordering system coming soon, please email us at info@goodcar.co and we'll send you details.





Ant, Anton & Sam, Good Car Co-founders and Directors

“The time is now for electric cars.
In fact, the time is critical”

All our cars come with 6-month mechanical warranty and up to 3-year battery degradation warranty. We provide battery diagnostic reports, Australian compliant charging cable, and support from a team with technical expertise and a passion to decarbonise transport. We stand by our work by offering a 30 day returns policy - if the car doesn't meet your needs or expectations, we will refund or replace it - reasonable conditions apply.

CONTACT US

www.goodcar.co info@goodcar.co (03) 6121 4624

Dealers licence number: TAS: 6064 ACT: 20000521
